

Manor Park School & Nursery Newsletter

A MESSAGE FROM MR COTTERILL

Season's Greetings to all of our families, getting in the Christmas spirit. The children have been fabulous and worked very hard in preparing for their performances. Our Reception and Infant children were wonderful performing their Christmas nativity to two packed out audiences and our KS2 children pulled out all of the stops with their version of the Shakespeare classic 'The Tempest'. We have such talented children at Manor Park and yet again they have excelled. This is the first time that we have had Christmas performances since 2019 and the children rose to the challenge. Confident acting, singing, great public speaking and a real team ethic ensured that everything went with a bang! We have also had Christmas parties and a special visitor joined the children for the afternoon bearing gifts. Thank you to all of the children, parents and staff who have worked so hard and supported us.

As always, the school continues to develop and improve. You might have seen our new signage with the new logo, vision and values which we think look great and help to project what a great place Manor Park is. Over Christmas we will be upgrading our computing suite with 33 new computers with the latest spec, we are also purchasing an additional set of I-pads to ensure that we have the correct balance between fixed and mobile devices. We are very lucky to have a dedicated computing class room with the latest specification of computers as many schools do not have this and rely solely on portable devices. We feel that we have the best of both worlds at Manor Park.

You will notice a few new members of the Manor Park team when we return to school. They have a very important role in trying to keep us all safe and they will be out and about at the front of the school at the end of every day. They are in fact some signs that will be placed on the pavement opposite the school each day as a polite reminder that parents should not park there before or after school. After school seems to be a particular challenge at the moment. We do understand that you need to pick your children up and at times you will need to come in the car but we would ask that you do not park on the road opposite the school. There are signs that prohibit parking there at this time and it is to ensure the road is safe for cars and pedestrians. It is a busy time of day and when cars park there it creates a situation where only one car can drive up/down the road and cars can often be seen mounting the pavement and putting children and parents at risk of serious harm.

I would like to thank all of the parents and staff who are part of the MPSA and have worked hard this term organising events, raffles and presents for the children. Their help is invaluable in so many ways and is appreciated greatly by the school. Due to their hard work and the support of our community the MPSA have been able to donate £5000 towards our new computers and I-pads this year.

Thank you to all of the children, families, staff and governors for their hard work and support in making this another successful term in the life and times of Manor Park School and Nursery. I hope you all have a wonderful Christmas and New Year with lots of fun, food and festive cheer 😊 We look forward to seeing you all on Monday 8th January where we can start to look forward to lighter nights and the arrival of Spring.

IMPORANT INFORMATION

Remembering Belongings – Can we please ask that all children arrive to school with all of the items they require for the day. Delivering items throughout the day places extra workload on the school office and interrupt's the children's classes.

Coats and Wellies – With the weather getting wetter and colder can you please ensure your child has a cardigan/jumper and a coat with them daily. We also recommend wellingtons for access to the field and spinney. These can be sent in daily or left in the welly sheds. Please ensure your child's name is written inside each wellington.

Lateness – It is essential that you ensure that your child arrives at school on time to prevent disruption to your child's own learning and that of others. If you are experiencing difficulty with punctuality and would like to talk to us about it please contact the school office.

A polite reminder that the end of the school day is 3.15pm for KS1 and 3.20pm for KS2. Children must be collected from the playground at this time.



KEY DATES

- **18/12/23** – KS2 Christmas performance (afternoon and evening)
- **19/12/23** – KS2 Christmas performance (evening only)
- **19/12/23** – Class Christmas parties
- **20/12/23** – Break up for Christmas
- **08/01/24** – Return to school
- **16/01/24** – Y5 Greater Places Trip
- **18/01/24** – Y5&Y6 Knutsford Academy Athletics
- **29/01/24** – Y5 Bikeability
- **30/01/24** – Y5 Bikeability
- **31/01/24** – Y4 Bikeability
- **01/02/24** – REC Little Champions Knutsford Academy

60 KING STREET WINDOW

How lovely to have Manor Park featured in the 60 King Street window.

The Knutsford windows are put together as a tribute to the wonderful town spirit we have and for all the children and families see.

The theme this year is 'child's play'.

This window will be displayed throughout the whole of December and represents every school in Knutsford.



REC AND KS1 VISIT TO THE LOWRY

Reception and KS1 children visited the Lowry this term to explore the enchanting world of Julia Donaldson and Axel Scheffler. The children engaged in story writing, picture drawing, dress up, playing and story time. They even had a special visit from Stick Man!



CHOIR

Our choir have done two brilliant performances this half term including the Knutsford markets and Sharston House Nursing Home.



CHRISTMAS CELEBRATIONS

REC & KS1 Performance



Visit from Santa



Christmas parties

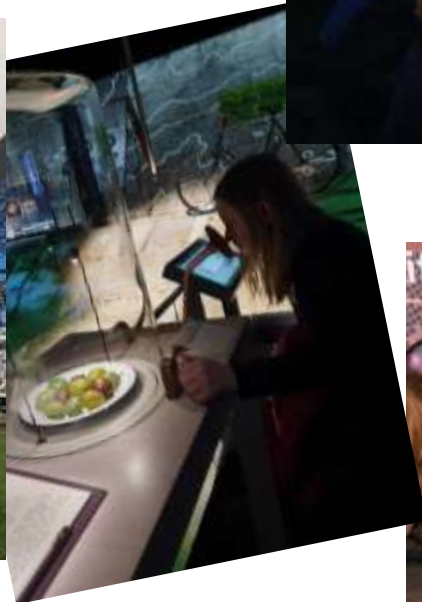


Advent calendar raffle winners



Y5&Y6 VISIT TO JODRELL BANK

All of the Y5 and Y6 children had a fantastic day at Jodrell Bank showing off their space knowledge.



SUPPORT FOR PARENTS/CARERS

Christmas is a challenging time of year for many, financially, socially, emotionally and physically for many different reasons. Shout is the UK's first and only free, confidential, 24/7 text messaging support service for anyone who is struggling to cope. To start a conversation, text the word 'SHOUT' to 85258 (messages won't appear on your phone bill). If you are feeling low, anxious, worried, lonely, overwhelmed, suicidal or not quite yourself their trained professionals are there to listen at any time of day or night.



ATTENDANCE

We advise parents/carers to avoid taking children out of school in term time. Holidays taken in term time will not be authorised. If you decide to take your child/children out of school, please call into the office for a Leave of Absence Form to be completed. This is so that we can accurately identify where a child is.

Please remember that taking your child out of school without the school's authorisation may result in the Local Authority issuing a Fixed Penalty Notice to each parent/carer for each child. The penalties are shown below.

| Penalties for unauthorised absence | | |
|------------------------------------|---|--|
| Timeline | One child | Two children |
| Paid within 21 days | £60 per parent | £60 per child = £120 per parent |
| After 21 days and before 28 days | £120 per parent | £120 per child = £240 per parent |
| After 28 days | You will receive a summons to appear before the Magistrates' Court on the grounds you have failed to secure your child's regular attendance | You will receive a summons to appear before the Magistrates' Court on the grounds you have failed to secure your children's regular attendance |

MPSA UPDATES

A very big thank you to everyone who supported the MPSA Christmas Raffle by purchasing raffle tickets which has helped us raise an amazing total of £1067 for our school. This year the money raised will go towards new IT equipment for the school. A huge thank you to the very generous businesses that have supported the raffle this year by donating prizes. The raffle would not have been possible without them or all of the hard work from the MPSA team.

The MPSA also raised £116 by selling tickets for the advent calendar raffle.



SAFEGUARDING

We have received a number of complaints from the school's neighbours regarding inconsiderate, and often illegal parking by parents/carers accessing the school in the mornings and afternoons, including parking in the zig zag lines outside school and parking across private driveways. We have also had complaints about parents/carers and children not crossing roads with due care and attention, putting themselves, other pedestrians and the drivers of any cars near school in danger. We speak to the children regularly about road safety and keeping safe when crossing the road. Please support us in doing the same to ensure your children have a happy and safe journey to and from school.

Our children's safety is our main priority therefore in the new year you will find our Manor Park road safety signs outside school as a reminder to all parents/carers, children and staff to prioritise road safety.



SAFEGUARDING KEY PEOPLE

Mr S Cotterill – Designated Safeguarding Lead

Mrs S Jeffery – Deputy Designated Safeguarding Lead

Mrs K Thatcher – Deputy Designated Safeguarding Lead

If you have a safeguarding concern please contact the school office and ask to speak to one of the safeguarding leads.